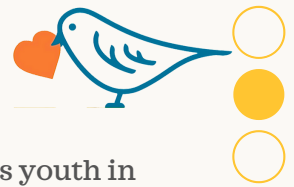


# EAST BAY WRAPAROUND



East Bay Wraparound (EBW) supports youth in building safe relationships, developing coping strategies, and connecting caregivers and youth to community resources. The program's primary goal is to promote home stability, enabling families to create and maintain a healthy living environment through individualized, family-driven plans.

The EBW team includes professionals such as a Care Coordinator, Behavior Specialist, Youth Partner, and Parent Partner—both of whom bring lived experience relevant to the challenges faced by participants. Services are provided at convenient community locations based on family preference. Families also have access to on-call clinicians during crises.

## Services

Our staff offers a comprehensive spectrum of support to participating youth and their families, which may include:

- Community-based, in-home individual and/or family therapy
- In-home behavioral support
- Case management, including connecting participants and families to other resources
- Psycho-education
- Peer and family support
- Crisis intervention
- Intensive care coordination
- Child and Family Team meetings
- On-call crisis support 24/7

## Eligibility

EBW is comprised of distinct programs that share a common approach and staffing:

- **EBW Full-Service Partnership San Mateo** provides services to foster youth living outside San Mateo County.
- **EBW Regional Center of the East Bay Program** serves neurodivergent youth who have a mental health diagnosis and whose needs often exceed their caregivers' resources.
- **EBW Full-Service Partnership Alameda County** supports youth aged 8-18 living in Alameda County who have high-intensity needs and are not connected to Probation or Child Welfare Systems.



## Philosophy

The Wraparound approach is rooted in collaboration with youth and their families. Families are at the center of all plans, which are developed with their input, strengths, and goals in mind. We strive to instill hope and encourage families throughout their journey toward improvement. Family involvement and easy access to services are core principles of the EBW program. With every family, we aim to ensure:

- **Voice and Choice** – Youth and families actively share their opinions, thoughts, concerns, and questions to guide all planning.
- **Easy Access to Services** – Staff meet with youth and families at convenient locations and times, promptly return calls, and utilize telehealth as needed

### Referrals/Contact

- San Mateo referrals come through San Mateo Behavioral Health and Recovery Services.
- Regional Center referrals come through individual case managers at RCEB.
- Alameda referrals comes through ACCESS 1- 800-491-9099

Nicole Austin, LMFT, Program Director  
☎ (510) 421-8430 ✉ nicoleaustin@fredfinch.org

**Fred Finch**  
Youth & Family Services

